

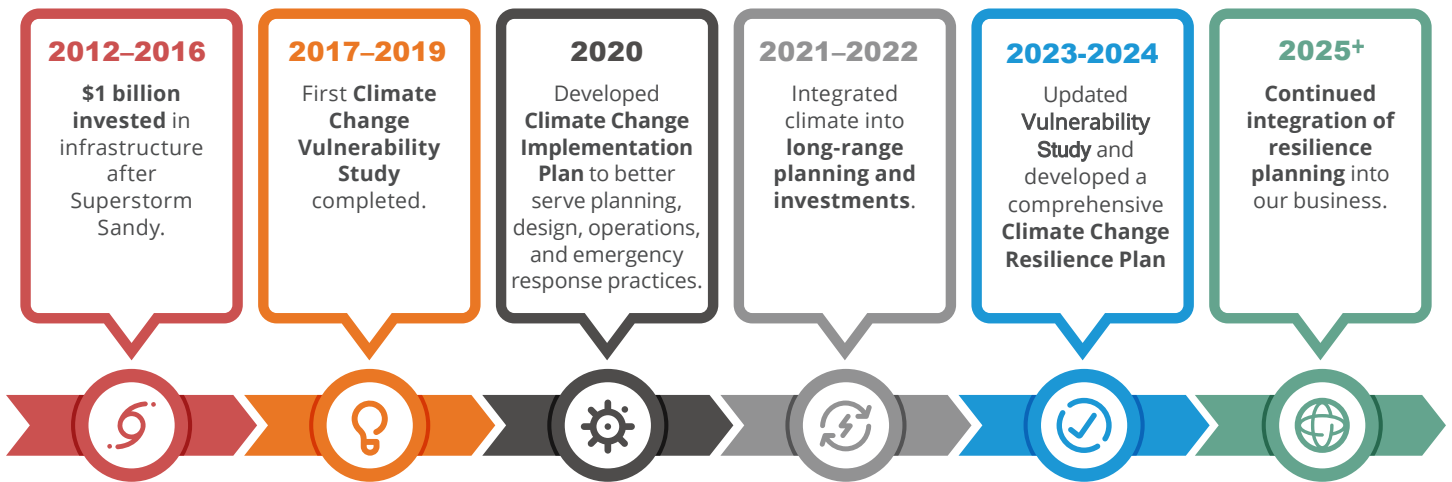


Our Climate Change Resilience Plan Moving Forward

Building Climate Resilience for Our Customers

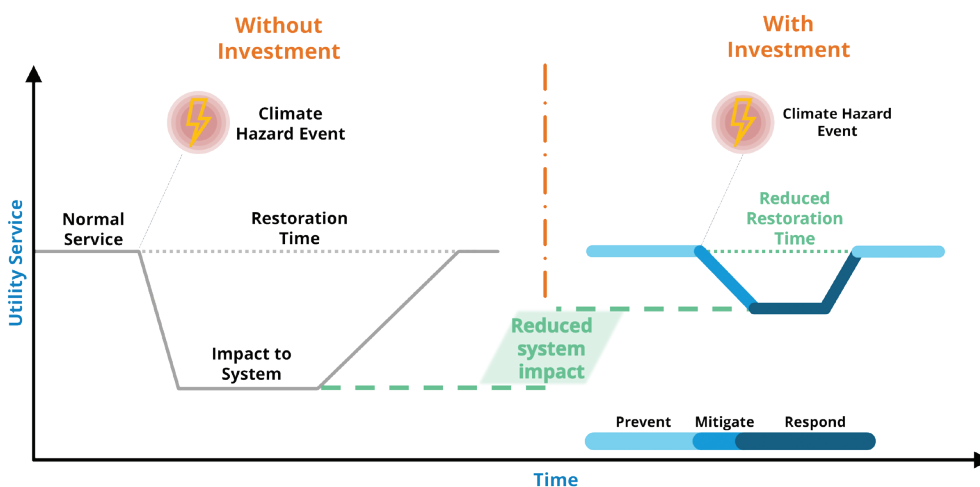
Con Edison has filed a Climate Change Resilience Plan that outlines our proposed investments to enhance our climate resilience. To us, a resilient electric system is one that is prepared for changes in climate and extreme weather and can bounce back quickly after a major event, such as a hurricane. These investments will reduce customer outages and help us restore power more quickly when there is an outage, so you can continue to count on the energy you need.

OUR RESILIENCE JOURNEY



Our **holistic resilience approach** helps us think strategically, innovatively, and equitably about investments to reduce both near- and long-term climate change risks.

The three main strategies in Con Edison's resilience approach (Prevent, Mitigate, and Respond) help us fortify our infrastructure, systems, and services.



Prevent

Fortify infrastructure to decrease the risk of outages.

Mitigate

Reduce the impact of outages on customers.

Respond

Enhance our recovery from power outages.

A Changing Environment

Electric System Investments for a Resilient Future



HEAT

It's getting hotter faster. By 2030, New York City could experience **up to 17 days per year** (a more than 4x increase from the past) with temperatures **exceeding 95°F**.



FLOODING

Heavy rainfall events are getting more intense and happening more frequently. Sea levels are projected to **rise 16 inches by 2050**, causing more coastal flooding.



WIND AND ICE

Maximum wind gusts in New York City could increase **from 80 mph to 110 mph** by mid-century, and even though the region is warming, there is the potential for significant icing events in the winter months.



EXTREME EVENTS

Our weather is becoming more volatile. Science indicates we will likely be hit by **stronger hurricanes**, more extreme heat waves, and other intense weather events in the future.

Con Edison' climate change resilience investments that support our holistic approach include:



Prevent

- Selective Undergrounding
- Non-Network Resiliency
- Substation Operations Storm Hardening
- Submersible Equipment
- Critical Facilities
- Substation Enclosure Upgrade



Mitigate

- Primary Feeder Resiliency
- Erosion Protection and Drainage Upgrade
- Non-Network Resiliency Cutout Upgrade

While this Plan focuses on the Prevention and Mitigation strategies for climate resilience investments, we continue to invest in our Response strategies found in other corporate filings.

We're Building a Next-Generation Climate-Resilient Grid for All

Con Edison has released an Environmental Justice policy statement to guide future investments. As part of the decision-making process for investments, the Company will consider potential benefits and impacts to disadvantaged communities.

Follow along for updates on future resilience efforts at conEd.com/Resilience