

INTEGRAL BYPASS VALVE REQUIRED ON METER INLET VALVE WHEN VALVE IS 8" OR LARGER. SEE NOTE P

P1	P1	P2
----	----	----

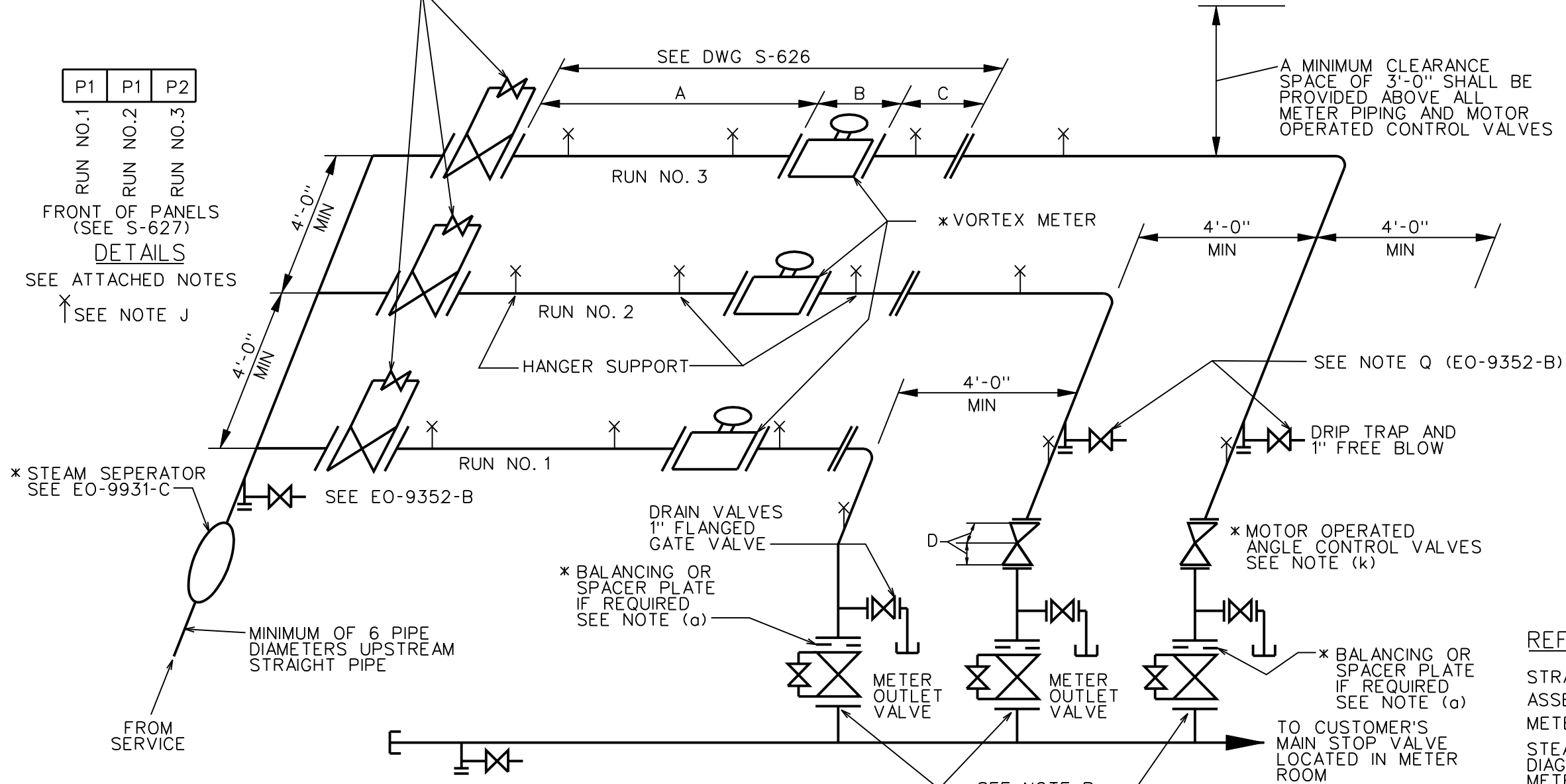
RUN NO.1
RUN NO.2
RUN NO.3

FRONT OF PANELS (SEE S-627)

DETAILS

SEE ATTACHED NOTES

↑ SEE NOTE J



* SUPPLIED BY CON EDISON CO.

P MOUNTING PANELS FOR INSTALLATION SEE STEAM ENG SPEC NO. S-627.

REFERENCE SPEC'S:

- STRAIGHTENING VANE - S-464
- ASSEMBLY OF VORTEX METER - S-588
- METER WITH STRAIGHTENING VANE - S-591
- STEAM METER PANEL WIRING DIAGRAM FOR TYPICAL VORTEX METER INSTALLATION WITH LIMITORQUE OPERATED VALVE - S-623
- CONTROL PANEL FOR VORTEX METER WITH LIMITORQUE OPERATED VALVE - S-627

NOTE:

A MINIMUM CLEAR SPACE SHALL BE PROVIDED IN FRONT OF MOTOR OPERATOR OF CONTROL VALVES AS SPECIFIED IN COLUMN "E".

METER PIPING		DIMENSIONS		
NOMINAL SIZE	ID	A(MIN)	B	C
4"	4.026"	180"	9.50	40
6"	6.065"	270"	12.75	60
8"	7.981"	360"	15.75	80
10"	10.020"	450"	16.20	100
12"	12.000"	540"	18.20	120

MOTOR OPERATED VALVE					
NOMINAL SIZE	DIMENSIONS		APPROX WEIGHT	APPROX MOTOR HORSE POWER	CONTROL PANEL SPEC NO
	D	E			
4"	7"	60"	600*	0.5	S-627
6"	8.75"	72"	900*	2.0	
8"	11"	72"	1100*	2.0	
10"	12.25"	84"	1500*	3.0	
12"	14"	96"	2000*		

TYPICAL INSTALLATION OF THREE VORTEX METERS CONSISTING OF AT LEAST ONE 6" OR LARGER SIZE METER

CONSOLIDATED EDISON COMPANY OF N.Y., INC.
STEAM DISTRIBUTION ENGINEERING

DATE 04-28-00	DWG. NO.	REV.
LAST REV. 01-20-06	S-625	1