

DRAWN BY	BURKE, J.
DATE	05/25/00
REVISIONS	
1	12/07/01
2	03/06/03
3	08/28/03
4	11/14/05
5	07/31/06
6	
7	

Revised for digital meter installation

Abdalla, A.

Revised to add # 10 AWG ground wire for use with digital vortex meter in future

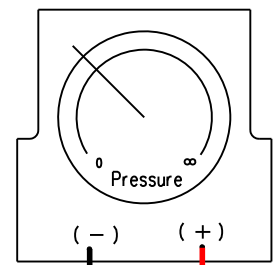
2/15/13

AW, DK

Revised rating of the signal wire to 300V 105°

COMPUTER GENERATED DRAWING NOT TO BE HAND REVISED

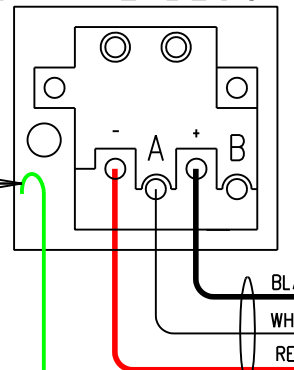
KEP TOTALIZER #1 METER



1	2	3	4	5	6	7	8	9	10	11	12	13	14	15	16	17	18	19	20	21	22	23	24
+	P	-					+			-						NO	C	NC	NC	C	NO	L	N

16 AWG, (4 CONDUCTORS, 2-TWISTED SHIELDED PAIRS) STRANDED TYPE, COPPER, (300V 105°C RATING)

#1 Vortex Meter TERMINAL BLOCK



16 AWG, 4-CONDUCTOR, 2 TWISTED SHIELDED PAIRS) STRANDED TYPE (300 V 105°C RATING)

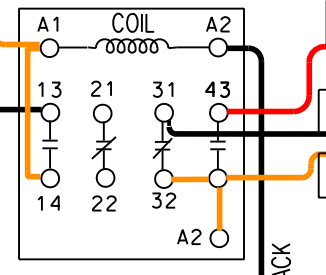
10 AWG, SOLID, COPPER (FOR DIGITAL VERSION VORTEX METER)

Hot, Ground, & Neutral jumpers terminate at this terminal block; not at KEP Terminal block

14 AWG, STRANDED, COPPER

14 AWG, STRANDED, COPPER

1
G.E. RELAY
RL4RA022TJ
W/ SUPPRESSOR
BSLR2K



15A FUSE

5A FUSE

To Terminal Block #1

PRESSURE SIGNAL

to KEP #2:
to terminal #11
to terminal # 4

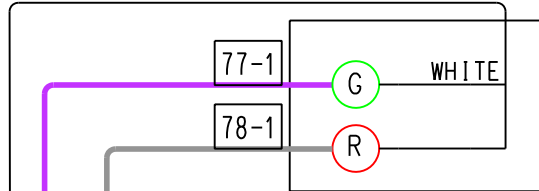
16 AWG, TWISTED STRANDED, COPPER, BRAID SHIELDED (300V 105°C RATING) 2 Conductor Cable Only

NOTE: IF P-XMTR TO BE INSTALLED, REFER TO SPEC S-624 R6

SENTRY 30E
ISO RELAY

OUTPUT TO BMS (S618) TYPICAL

120 V AC RATED LIGHTBULB INDICATOR LIGHTS



- 77-1 GRAY or BROWN
- 77-1 PURPLE or BLUE
- 43-1 RED (CLOSE)
- 31-1 BLACK (OPEN)
- 44-1 ORANGE (LIGHT)
- WHITE (NEUTRAL)
- GREEN (Ground)

BALL VALVE Actuator TERMINAL BOX (BALL VALVE #1 ON METER RUN #2)

14 AWG, Stranded Copper

WIRING DIAGRAM FOR VORTEX METER (ANALOG VERSION) WITH BALL VALVE, PRESSURE TRANSMITTER AND MODEM BOX (SEQ.)

CONSOLIDATED EDISON COMPANY OF N.Y. INC. STEAM DISTRIBUTION ENGINEERING

DATE: 03/06/03 LAST REV: 2/15/13 DWG. NO. S-624 R7 (KEP 1)