

BURKE J. 11/02/99

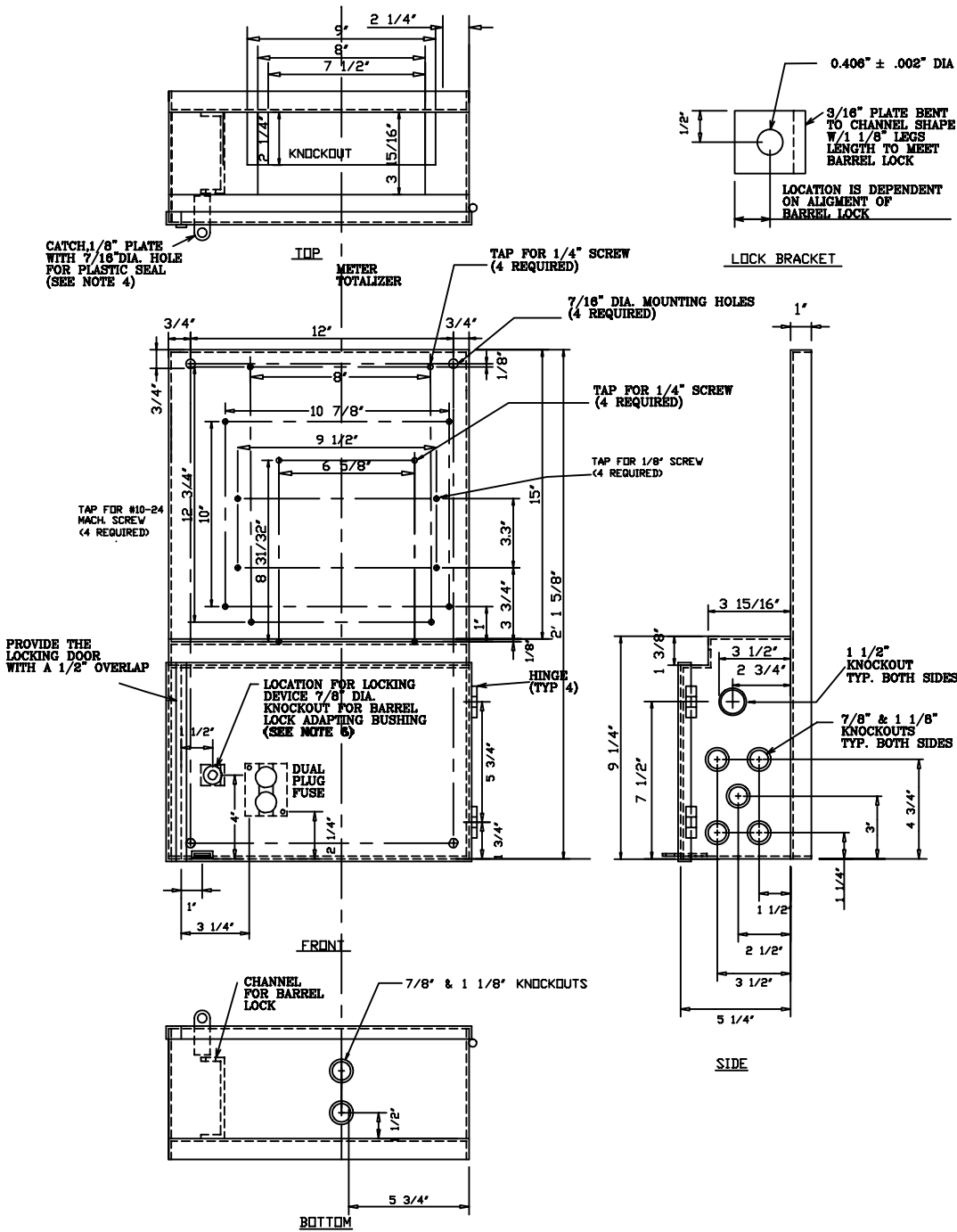
REVISIONS

BURKE J. 03/07/00 1

- 1. HEIGHT INCREASED, 8-1/4" TAP-HOLE ADDED
- 2. 1 1/2" KNOCKOUT ADDED

BURKE J. 05/02/00 12

REVISED NOTES



1. THE CABINET SHALL BE OF NO.14 U.S.S. GAUGE, AND THE BACK PLATE AND SHIELD OF NO.12 U.S.S. GAUGE SHEET STEEL.
2. UNLESS OTHERWISE SPECIFIED TOLERANCE ON HORIZONTAL TAPPED HOLES TO BE ± .010" AND ARE TO HAVE AT LEAST THREE COMPLETE THREADS.
3. ALL STEEL SURFACES SHALL HAVE A PROTECTIVE COATING OF GREY OR, BIEGE COLOR-BAY FOG BY O'BRIEN POWER PRODUCTS INC. IF DRILLING INTO PANEL IS REQUIRED, WEAR RESPIRATOR WITH P100 CARTRIDGE AND DRILL THROUGH DUCT TAPE. CLEAN UP ANY DUST GENERATED. NO BURNING OR WELDING IS ALLOWED.
4. CABINET DOOR SHALL BE PROVIDED WITH CATCH AND FACILITIES TO ACCOMMODATE STANDARD SEALS AND PADLOCK WITH 5/16" DIA. HASP.
5. SAMPLES OF THE EQUIPMENT SHALL BE SUBMITTED TO THE STEAM ENGINEERING DEPARTMENT FOR APPROVAL.
6. HIGHFIELD LOCK RECEPTACLE, HIGHFIELD MFG. CO., BRIDGEPORT CONN. OR BROOKS BARREL LOCK GUARD NO. 865, E.J. BROOKS, NEWARK, NEW JERSEY. THE LOCKING DEVICE AND LOCK BRACKET SHALL BE PROPERLY ALIGNED TO RECEIVE A UTILITY BARREL LOCK.
7. THE EQUIPMENT SHALL MEET THE REQUIREMENTS OF THE N.Y.S. BOARD OF FIRE UNDERWRITERS, AND THE DEPT. OF BUILDINGS OF THE CITY OF NEW YORK.
8. NAME PLATE SHALL BE AFFIXED ON THE OUTSIDE OF THE ENCLOSURE INDICATING THE MANUFACTURERS NAME AND CATALOG NO.
9. THE TWO LOWER TAPPINGS ARE TO BE PREFITTED WITH 1/4"-20 x 3/4" STEEL MACHINE SCREWS. THE SCREW HEAD DIAMETERS ARE NOT TO EXCEED 7/16".

| | | |
|---|-----------------|--------|
| METER PAN FOR VORTEX STEAM METER | | |
| CONSOLIDATED EDISON COMPANY OF N. Y. INC. STEAM ENGINEERING DEPARTMENT | | |
| DATE 11/02/99 | SPEC. NO. S-622 | REV. 2 |
| LAST REV. 05/02/00 | | |

CONSTRUCTION STDS
MANUAL NO. 3
SECTION A 51
STEAM METERING