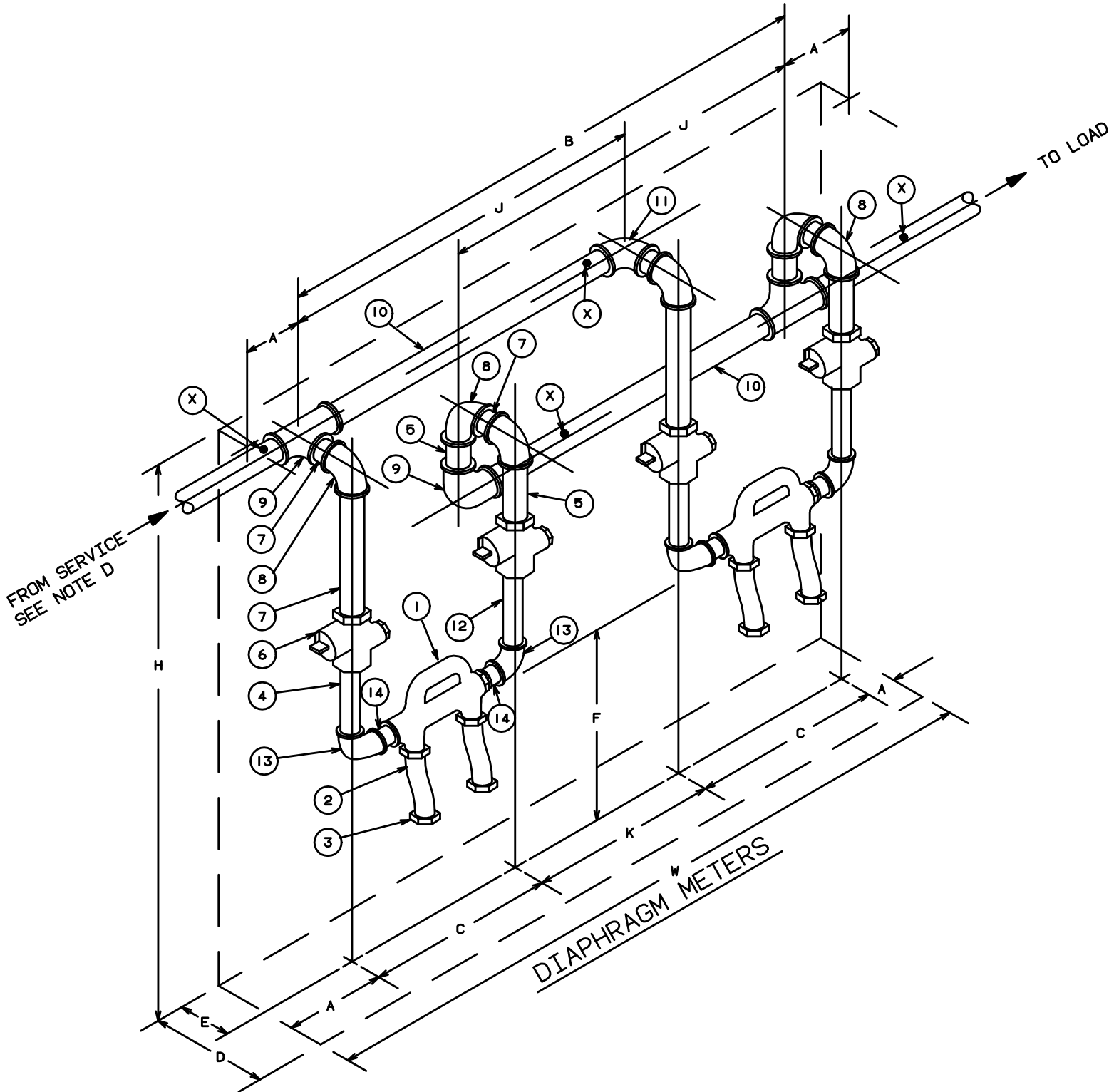


EO-7421-B

REVISIONS

6. LUDWIG	19
11/24/15	
DELETED CL-500 & CL-1000 METER DETAILS. REVISED BILL OF MATERIAL. DELETED ALTERNATE METER BAR DETAIL. REVISED TITLE. ADDED EFFECTIVE DATE	
G.Y.	8-7-15



H	HEIGHT (MIN.)	66"
W	CLEARANCE LEFT TO RIGHT	67"
D	CLEARANCE FROM WALL	48"

MINIMUM SPACE REQUIRED

K	¢ TO ¢ OF PIPES	12"
J	¢ TO ¢ OF PIPES ON HEADER	27 1/2"
	BOTTOM OF METER BAR TO FLOOR(MIN.)	50"
F	BOTTOM OF METER BAR TO FLOOR(MAX.)	82"
E	¢ OF METER BAR TO REAR WALL	9"
C	¢ TO ¢ IN/OUTLET PIPING	16 1/2"
B	¢ TO ¢ OF PIPES	43"
A	CLEARANCE FROM ¢ OF PIPE	12"

DIMENSIONS

16	ELBOW	1"
15	NIPPLE	1" x 2"
14	NIPPLE	1" x 2"
13	ELBOW	1"
12	NIPPLE, SCH. 80	1" x 5"
11	ELBOW, REDUCING FROM HEADER SIZE TO:	1"
10	HEADER (MIN.)	1 1/2"
9	ELBOW, REDUCING FROM HEADER SIZE TO:	1"
8	ELBOW	1" x 1"
7	NIPPLE	1"
6	METER VALVE *	1"
5	NIPPLE	1" x 2"
4	NIPPLE	1" x 5"
3	SWIVEL CAP	20 LT.

2	SWIVEL	PART OF A.Y McDONALD BYPASS METER BAR ASSEMBLY
1	BYPASS METER BARS *	A.Y McDONALD 6410 FFE-W 1X1X1 BYPASS MTR BAR

METER SPECIFICATIONS
AND PROCEDURES
VOLUME NO. 3
AND YELLOW BOOK

ITEM NO.	METER CLASS-PROC. G-48 DESCRIPTION	250 TC
BILL OF MATERIAL		

NOTES:

- (A) ALL MATERIAL SHALL BE FURNISHED AND INSTALLED BY CUSTOMER.
- (B) ALL PIPING SHALL BE INSTALLED PLUMB AND LEVEL.
- (C) ALL PIPE TO BE STANDARD WALL STEEL, ALL FITTINGS TO BE 150 LB STANDARD WALL MALLEABLE IRON.
- (D) WHERE SERVICE PIPE IS BURIED STEEL, INSTALL INSULATED COUPLING BETWEEN SERVICE HEAD VALVE AND METER.
- (E) PIPING MUST BE LEFT CAPPED BY CONTRACTOR PRIOR TO METER INSTALLATION.
- (F) FOR CLASS 250 TC GAS METERS, METER BAR SHALL BE A.Y. McDONALD 6410 FFE-W 1X1X1
- * SEE YELLOW BOOK

(X) SUPPORT PIPING FROM WALL OR CEILING AT POINTS INDICATED.

EFFECTIVE DATE: FEB.1,2016

INSTALLATION OF TWIN
CLASS 250 TC
DIAPHRAGM
GAS METERS-INDOORS

CONSOLIDATED EDISON COMPANY OF N. Y. INC.
GAS OPERATIONS DEPT.

DATE 5-12-49
LAST REV.11/24/15

DWG. NO. EO-7421-B REV.19