

REVISIONS

G. LUDWIG
12/14/15

0

NEW ISSUE

A.S. 12-9-18

G. LUDWIG
10/6/20

1

ADDED DETAIL FOR
6312 BYPASS METER
BAR. UPDATED BILL OF
MATERIALS.

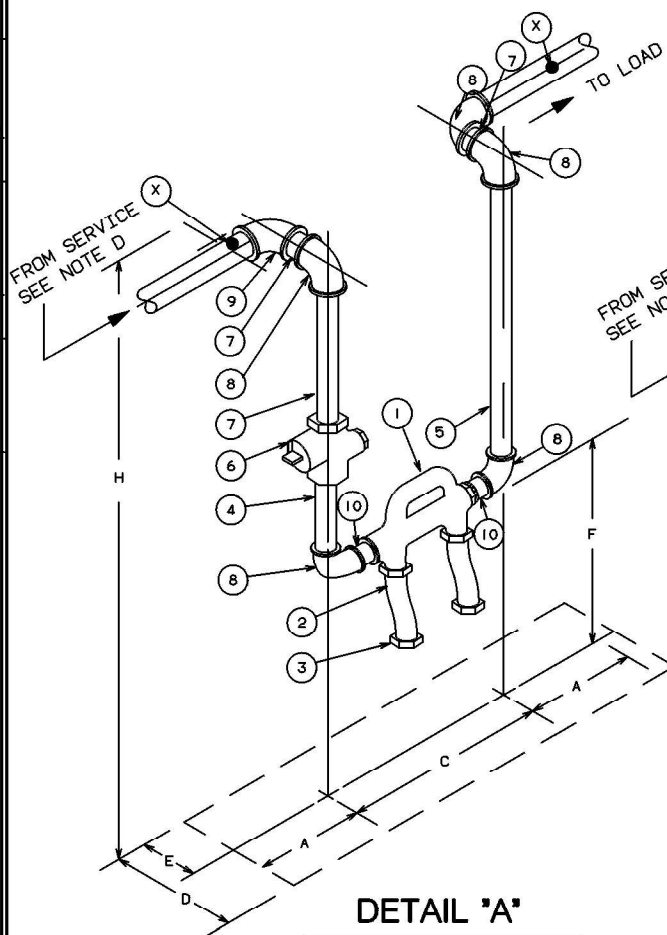
D.J.
D.O. 10/6/20

G. LUDWIG
11/16/22

2

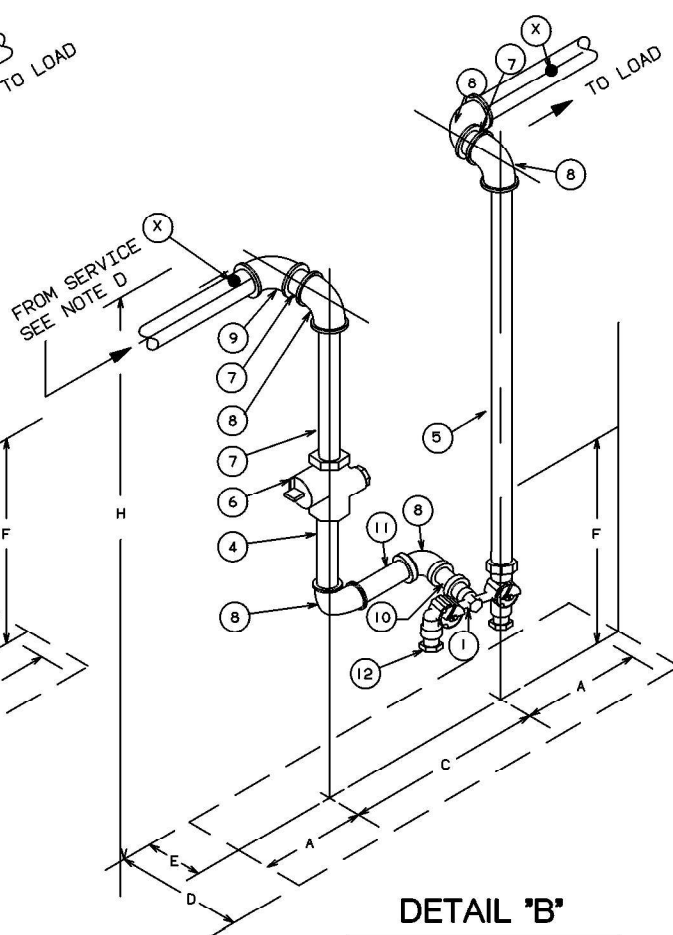
REMOVED ITEM FROM
DRAWING AND UPDATED
BILL OF MATERIALS

S.P 11/16/22



DETAIL 'A'

6410 BYPASS METER BAR



DETAIL 'B'

6312 BYPASS METER BAR

BILL OF MATERIAL

NO. ITEM	DESCRIPTION	
	METER CLASS-PROC. G-48	250 TC
1	BYPASS METER BARS*	A.Y McDONALD 6410-FFE-W 1X1X1 (SEE DETAIL "A") A.Y McDONALD 6312-FFE-W 1X1X1 (SEE DETAIL "B") 1" x 1" x 20LT.
2	SWIVEL	PART OF A.Y McDONALD BYPASS METER BAR ASSEMBLY
3	SWIVEL CAP	20 LT.
4	NIPPLE	1" x 5"
5	NIPPLE	1" x 10"
6	METER VALVE *	1"
7	NIPPLE	1"
8	ELBOW	1"
9	ELBOW,REDUCING FROM SERVICE SIZE TO:	1"
10	NIPPLE	1" x 2"
11	NIPPLE	1" x 10"
12	SWIVEL * REQ'D. 1"NPT 20LT W/1/4" NPT TAP (TAP FOR MTR OUTLET ONLY) PART OF BYPASS METER BAR ASSEMBLY.	1" x 20LT.

DIMENSIONS

A	CLEARANCE FROM # OF PIPE	12"
C	# TO # IN/OUTLET PIPING	16 1/2"
E	# OF METER BAR TO REAR WALL	9"
F	BOTTOM OF METER BAR TO FLOOR(MAX.)	82"
	BOTTOM OF METER BAR TO FLOOR(MIN.)	50"

MINIMUM SPACE REQUIRED

D	CLEARANCE FROM WALL	48"
H	HEIGHT (MIN.)	66"

NOTES:

- (A) ALL MATERIAL SHALL BE FURNISHED AND INSTALLED BY CUSTOMER.
 (B) ALL PIPING SHALL BE INSTALLED PLUMB AND LEVEL.
 (C) ALL PIPE TO BE STANDARD WALL MALLEABLE IRON, TO BE 150 LB STANDARD WALL MALLEABLE IRON.
 (D) WHERE SERVICE PIPE IS BURIED STEEL, INSTALL INSULATED COUPLING BETWEEN SERVICE HEAD VALVE AND METER.
 (E) PIPING MUST BE LEFT CAPPED BY CONTRACTOR PRIOR TO METER INSTALLATION.
 (F) FOR CLASS 250 TC GAS METERS, METER BAR SHALL BE A.Y. McDONALD 6410 FFE-W 1X1X1

* SEE YELLOW BOOK

(X) SUPPORT PIPING FROM WALL OR CEILING AT POINTS INDICATED.

INSTALLATION OF
CLASS 250 TC
DIAPHRAGM
GAS METER-INDOORS

CONSOLIDATED EDISON COMPANY OF N. Y. INC.
GAS OPERATIONS DEPT.

DATE 12/14/15
LAST REV. 11/16/22

DWG. NO. EO-511327 REV. 2