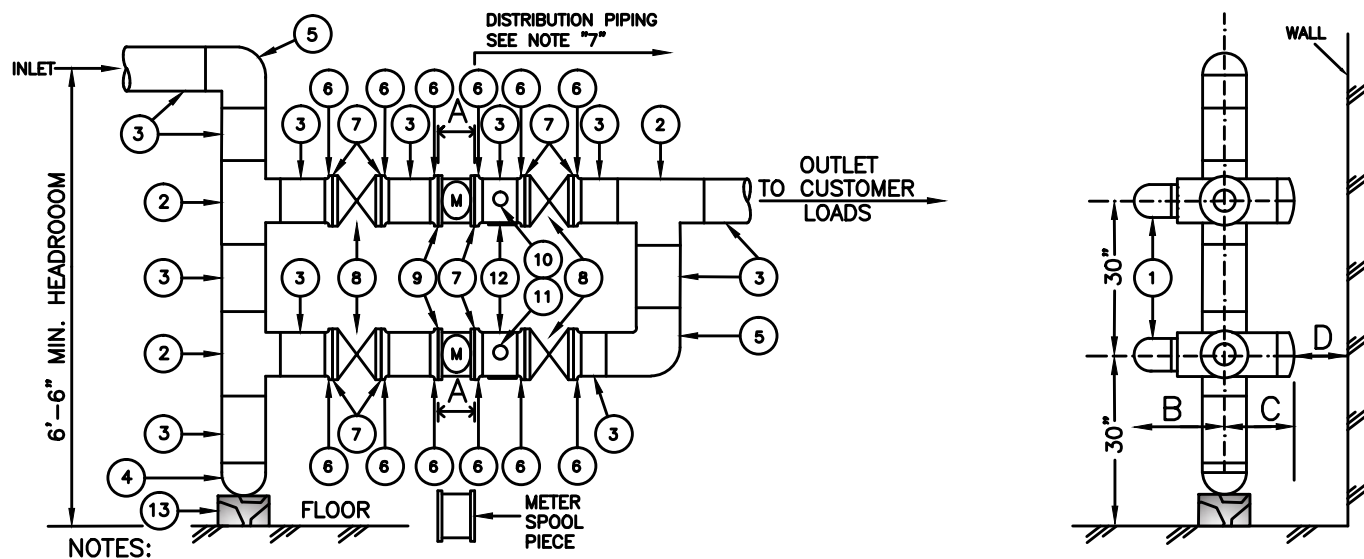


REVISIONS	
G. LUDWIG 4/14/15	0
NEW DRAWING INFO PREVIOUSLY COVERED ON DRAWING 365531	
D.T.	3/26/15



1. ALL MATERIALS TO BE FURNISHED AND INSTALLED BY THE CUSTOMER EXCEPT FOR THE METERS AND GASKETS WHICH WILL BE FURNISHED AND INSTALLED BY THE COMPANY.
2. ALL PIPE TO BE INSTALLED PLUMB AND LEVEL.
3. DO NOT INCLUDE REGULATORS OR METERS IN PRESSURE TESTS. USE METER SPOOL PIECES AS DEPICTED. LEAVE PIPE BLANK FLANGED PRIOR TO METER INSTALLATION.
4. INSTALLATIONS WITH VOLUME CORRECTORS MUST HAVE 24" MINIMUM CLEARANCE ON TOP OF THE METER.
5. INSTALL PIPE SUPPORTS AS DEPICTED AND AS NEEDED. REFER TO SPEC. G-695. PIPE SUPPORTS SHALL NOT BE WELDED TO METER/DISTRIBUTION PIPING.
6. PRESSURE TEST TO BE CONDUCTED AS PER YELLOW BOOK.
7. DISTRIBUTION PIPING EXCLUDING METER PIPING MUST MEET ALL WELDING, SPECIAL INSPECTION, AND RADIOGRAPHY REQUIREMENTS OF THE NYC BUILDING CODE OR OTHER AUTHORITY HAVING JURISDICTION.
8. FOR CON EDISON LOW PRESSURE SYSTEMS, AN INSULATED COMPRESSION COUPLING OR FLANGE INSULATING KIT AS APPROPRIATE SHALL BE INSTALLED IMMEDIATELY DOWNSTREAM OF THE HEAD OF SERVICE VALVE. FOR CON EDISON MEDIUM AND HIGH PRESSURE SYSTEMS, AN INSULATED COMPRESSION COUPLING OR FLANGE INSULATING KIT SHALL BE INSTALLED IMMEDIATELY DOWNSTREAM OF THE REGULATOR.
9. FOR INSTALLATIONS HAVING BRANCH LINES THAT ARE SEPARATELY METERED AND/OR SEPARATELY REGULATED, REFER TO SPEC G-703 FOR PIPE SIZING REQUIREMENTS.
10. ALL METER PIPING (PIPING FROM THE HEAD OF SERVICE VALVE TO METER OUTLET) GREATER THAN 4 INCHES IN DIAMETER SHALL BE BUTT WELDED. ELEVATED DELIVERY PRESSURE METER PIPING SHALL BE RADIOGRAPHED.
11. GASKET MATERIAL SHALL BE GARLOCK 3000 (1/16" THICK). GASKET STRAINER CONTAINS A 60 MESH STAINLESS STEEL SCREEN.

METER CLASS	METER TYPE	PIPE SIZE	FLANGE TO FLANGE A	LEFT TO RIGHT FLOW B C D—MINIMUM			LEFT TO RIGHT FLOW B C D—MINIMUM		
				B	C	D—MINIMUM	B	C	D—MINIMUM
23000R	23M175ID	6.00"	16.00"	20.75"	12.25"	6.00"	12.25"	20.75"	9.00"
38000R	RM38000ID	6.00"	16.00"	14.72"	11.20"	6.00"	11.20"	14.72"	9.00"
	38M175ID	6.00"	18.00"	23.22"	14.97"	6.00"	14.97"	23.22"	9.00"

BILL OF MATERIALS			
ITEM	DESCRIPTION	SPEC/STD	SIZE
1	GAS METER	G-48	23000R 23M175ID 38000R 56000R
2	TEE, STEEL, SCH 40, BUTT WELD	ASME B16.9	6"
3	PIPE, STEEL, SCH 40, BUTT WELD	G-8107	6"
4	CAP, STEEL, SCH 40, BUTT WELD	ASME B16.9	6"
5	ELBOW, STEEL, SCH 40, BUTT WELD	ASME B16.9	6"
6	FLANGE, FORGED STEEL, FULL FACE, 150#, WELD NECK	ASME B16.5	6"
7	GASKET, FULL FACE, 150#, (SEE NOTE 11)	-	6" X 1/16"
8	METER VALVE, FLANGED, LUBRICATED PLUG	*TABLE 3	6"
9	GASKET STRAINER, 150#, FULL FACE, 60 MESH, S.S.	G-8220	6" X 1/16"
10	THREADOLET	ASME B16.9	6" X 1"
11	PLUG, STEEL, SQ. HEAD	ASME B16.14	1"
12	PIPE SUPPORT	G-695	6"
13	BLOCK, CONCRETE, SOLID	-	6" X 6" X 4"

\* SEE YELLOW BOOK.

**METERING  
SPECIFICATIONS  
AND PROCEDURES  
VOLUME NO.3  
YELLOW BOOK**

# INSTALLATION OF METER PIPING FOR TWIN CLASS 23000R (6") TO 38000R (6") ROTARY GAS METERS - INDOORS

CONSOLIDATED EDISON COMPANY OF N.Y., INC.  
GAS OPERATIONS DEPT.

DATE 00/00/00

LAST REV. 4/14/15

DWG.

NO.

**507003**

REV. 0