

506214

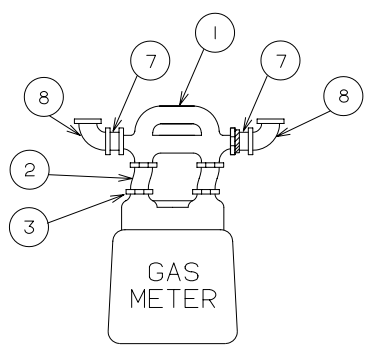
REVISIONS

G. LUDWIG	0
11/24/15	
NEW ISSUE	
G.Y.	8-7-15
G. LUDWIG	1
07/03/18	

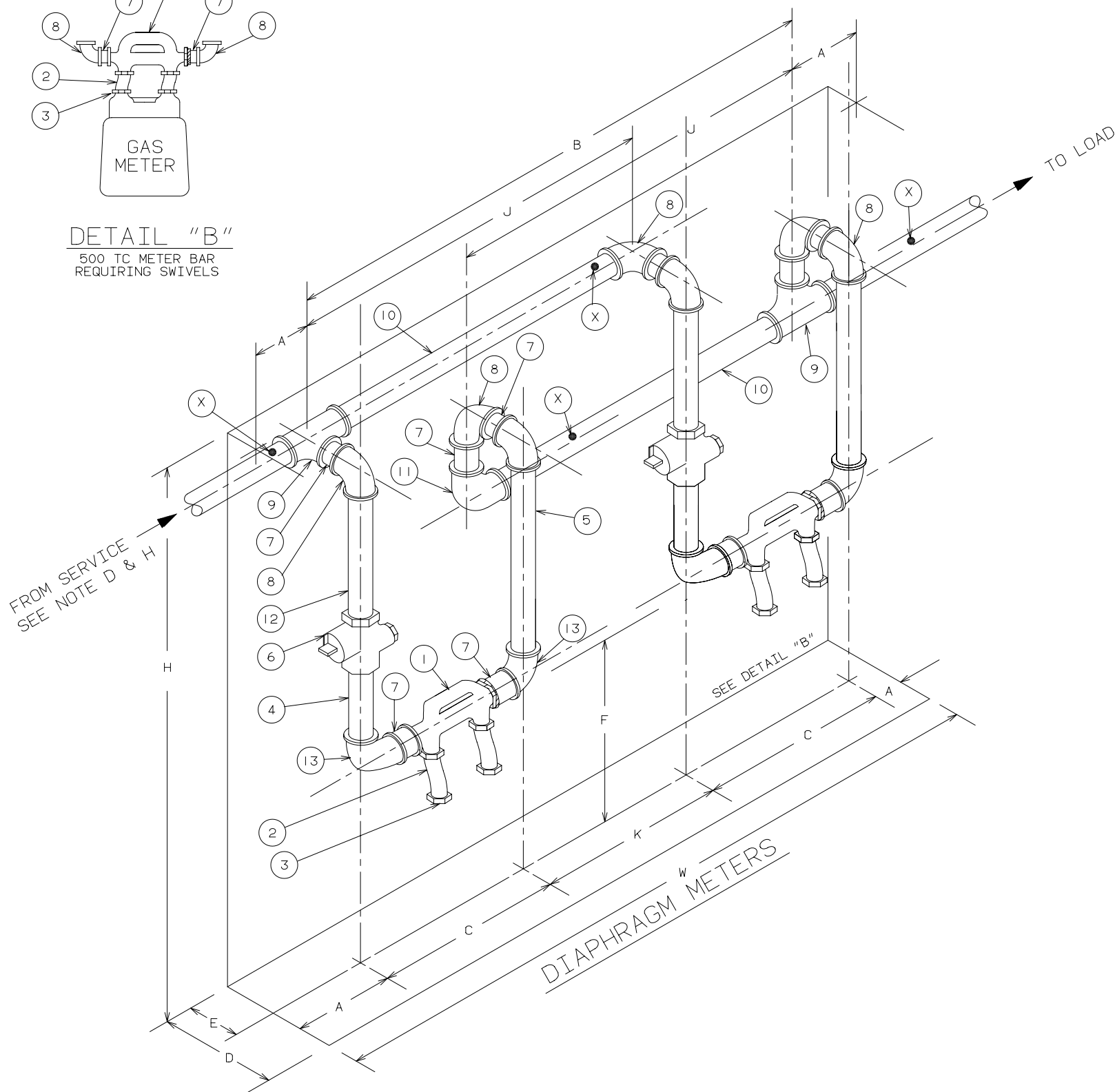
REPLACE METER BAR WITH A.Y. McDONALD BYPASS METER BAR 6480 FFE-W

REV "FROM SERVICE SEE NOTE D" TO INCL. "H."REV BILL OF MAT. REV * UNDER NOTES. REV TITLE TO INCLUDE OUTDOOR. REMOVED ALTERNATE METER BAR.

S. ACEVEDO 04/10/18



DETAIL "B"
500 TC METER BAR
REQUIRING SWIVELS



NOTES:

- (A) ALL MATERIAL SHALL BE FURNISHED AND INSTALLED BY CUSTOMER.
- (B) ALL PIPING SHALL BE INSTALLED PLUM AND LEVEL.
- (C) ALL PIPE TO BE STANDARD WALL STEEL, ALL FITTINGS TO BE 150 LB STANDARD WALL MALLEABLE IRON.
- (D) WHERE SERVICE PIPE IS BURIED STEEL, INSTALL INSULATED COUPLING BETWEEN SERVICE HEAD VALVE AND METER.
- (E) PIPING MUST BE LEFT CAPPED BY CONTRACTOR PRIOR TO METER INSTALLATION.
- (F) FOR CLASS 500 TC AND CLASS 1000 TC GAS METERS, METER BARS SHALL BE A.Y. McDONALD 6480 FEE-W 1 1/4" X 1 1/4" X 1 1/4" & 1 1/2" X 1 1/2" X 1 1/2"
- (G) ALL PIPE AND FITTINGS SHALL BE SCHEDULE 40
- (H) FOR OUTDOOR TWIN CLASS 500/1000 METER INSTALLATIONS, USE THE SERVICE RISER DETAIL FROM CON EDISON DRAWING EO-506175
- (I) GAS METER CLEARANCE FROM GROUND SHALL BE A MINIMUM OF 6 INCHES
- * SEE *A CUSTOMER GUIDE TO NATURAL GAS SERVICE INSTALLATION (YELLOW BOOK)
- (X) SUPPORT PIPING FROM WALL OR CEILING AT POINTS INDICATED.

EFFECTIVE DATE: AUG 09,2018

INSTALLATION OF TWIN
CLASS 500 TC
TO CLASS 1000 TC DIAPHRAGM
GAS METERS-INDOOR/ OUTDOOR

CONSOLIDATED EDISON COMPANY OF N. Y. INC.
GAS OPERATIONS DEPT.

DATE 5-12-49
LAST REV.07/03/18

DWG.
NO. 506214 REV. 1

METER SPECIFICATIONS
AND PROCEDURES
VOLUME NO. 3
AND YELLOW BOOK

BILL OF MATERIAL			
H	HEIGHT (MIN.)	70"	70"
W	CLEARANCE LEFT TO RIGHT	56"	74"
D	CLEARANCE FROM WALL	52"	54"
MINIMUM SPACE REQUIRED			
K	¢ TO ¢ OF PIPES	12"	12"
J	¢ TO ¢ OF PIPES ON HEADER	22"	31"
F	BOTTOM OF METER BAR TO FLOOR(MIN.)	50"	50"
	BOTTOM OF METER BAR TO FLOOR(MAX.)	82"	82"
E	¢ OF METER BAR TO REAR WALL	12"	12"
C	¢ TO ¢ INLET/OUTLET PIPING	10"	12"
B	¢ TO ¢ OF PIPES	32"	50"
A	CLEARANCE FROM ¢ OF PIPE	12"	12"
DIMENSIONS			
13	ELBOW, REDUCING	1 1/2" x 1 1/4"	2" x 1 1/2"
12	NIPPLE, SCH. 40	1 1/2"	2"
11	ELBOW, REDUCING FROM HEADER SIZE TO	1 1/2"	2"
10	HEADER	1 1/2"	2"
9	TEE, REDUCING FROM HEADER SIZE TO	1 1/2"	2"
8	ELBOW	1 1/2" x 1 1/2"	2" x 2"
7	NIPPLE	1 1/2" x 2"	2" x 2"
6	METER VALVE	1 1/2"	2"
5	NIPPLE	1 1/2" x 12"	2" x 8"
4	NIPPLE	1 1/2" x 6 1/2"	2" x 6 1/2"
3	SWIVEL CAP	30 LT.	60 LT
2	SWIVEL	PART OF A.Y. McDONALD BYPASS METER BAR	PART OF A.Y. McDONALD BYPASS METER BAR
1	BYPASS METER BARS	A.Y. McDONALD 6480 CCDM-V 1 1/4"x1 1/4"x1 1/4" BYPASS METER BAR	A.Y. McDONALD 6480 CCDM-V 1 1/2 x1 1/2"x1 1/2" BYPASS METER BAR
ITEM NO.	METER CLASS-PROC. G-48 DESCRIPTION	500 TC	1000 TC