

502664

REVISIONS

M. BALDOVIN 01/06/14

0

D.J. 01/03/14

M. BALDOVIN 10/06/14

1

NOTE D: ADDED 5' MIN. DISTANCE BETWEEN EM'S.

H.T. 10/06/14

M. BALDOVIN 10/04/19

2

REVISED NOTE: A, B, D AND E.

D.O. 10/04/19

M. BALDOVIN 12/13/19

3

REVISED NOTE: E

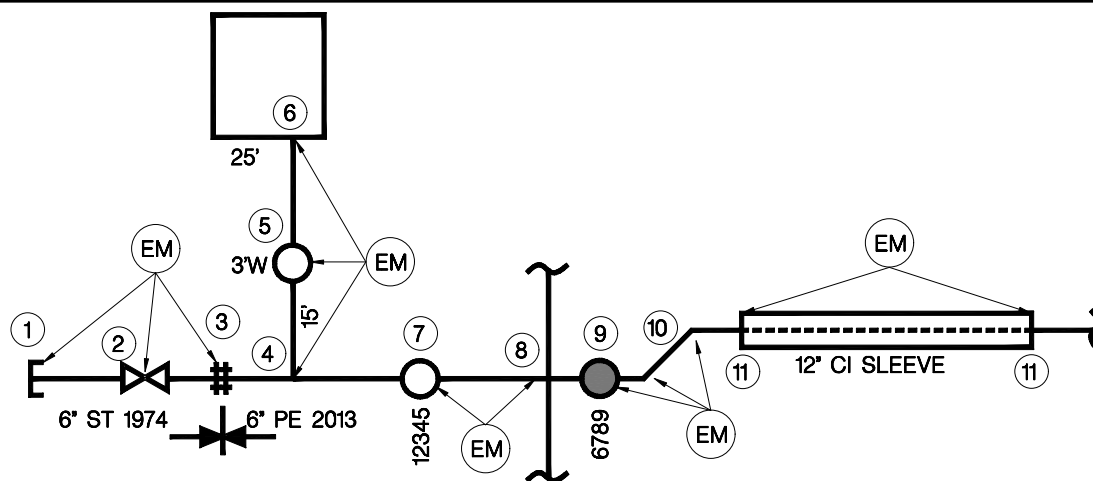
D.O. 12/13/19

J. MOAWAD 04/06/21

4

REVISED NOTE: D. 12

D.O. 04/06/21



NOTES

- A. NATURAL GAS ELECTRONIC MARKERS (EM) ARE RADIO FREQUENCY IDENTIFICATION (RFID) TAGS WITH THE INDUSTRY STANDARD 83 KHz SIGNAL FOR LOCATING BURIED GAS FACILITIES. ELECTRONIC MARKERS (EM) SHALL BE INSTALLED IN ADDITION TO GAS WARNING TAPE AND TRACER WIRE FOR PE PLASTIC PIPE.
- B. FOR GAS FACILITIES INSTALLED LESS THAN (<) 5 FEET DEEP, EM BALLS SHALL BE ATTACHED TO THE TOP OF STEEL (ST), WROUGHT IRON (WI), CAST IRON (CI), AND POLYETHYLENE (PE) PLASTIC BURIED GAS PIPE AND FITTINGS WITH NYLON/PLASTIC CABLE TIES. ENSURE EM BALL INSTALLATION DOES NOT INTERFERE WITH OPERATION OF VALVES.
- C. FOR GAS FACILITIES INSTALLED GREATER THAN OR EQUAL (\geq) 5 FEET AND LESS THAN (<) 8 FEET DEEP, EM FULL-RANGE MARKERS SHALL BE INSTALLED ADJACENT TO ST, WI, CI, AND PE PLASTIC GAS PIPE AND FITTINGS. ENSURE EM FULL-RANGE MARKER INSTALLATION DOES NOT INTERFERE WITH OPERATION OF VALVES.
- D. EM BALLS AND FULL-RANGE MARKERS SHALL BE INSTALLED AT THE FOLLOWING GAS DISTRIBUTION MAIN AND SERVICE LOCATIONS (REFER TO SKETCH ABOVE) AND SHALL NOT BE INSTALLED CLOSER THAN 5' TO ANOTHER EM FOR CLEAR IDENTIFICATION BY EM LOCATOR EQUIPMENT:
1. MAIN OR SERVICE STUB ENDS
 2. MAIN OR SERVICE REPAIR LOCATIONS
 3. MAIN OR SERVICE CHANGE IN MATERIAL
 4. MAIN-TO-SERVICE CONNECTIONS
 5. SERVICE CURB VALVES
 6. SERVICE POINT OF ENTRY AT OUTSIDE FOUNDATION WALL (DIRECT BURIED SERVICES)
 7. MAIN VALVES
 8. MAIN TIES OR CROSSES
 9. DRIP POT STANDPIPES
 10. MAIN OR SERVICE VERTICAL AND HORIZONTAL OFFSETS (GREATER THAN 2 FEET)
 11. MAIN OR SERVICE CASING ENDS (INSTALL ON CARRIER PIPE NOT INSERTED PIPE)
 12. MAIN OR SERVICE INSTALLATIONS: EVERY 20 LINEAR FEET
 13. TEST PITS (EXPOSED LIVE GAS PIPE ONLY)
- E. EM BALL AND EM FULL-RANGE MARKER INSTALLATION LOCATIONS SHALL BE NOTED ON AS-CONSTRUCTED DRAWINGS, EMERGENCY SKETCHES, AND CORRECTION-TO-DETAIL DRAWINGS. THEIR PRESENCE SHALL BE NOTED ON THE GAS MAPS.

MATERIAL

EM	CLASS & STOCK#
GAS MARKER BALL (PASSIVE)	456-0481
GAS FULL-RANGE MARKER (PASSIVE)	456-0482
30" CABLE TIES	007-6273

INSTALLATION OF ELECTRONIC MARKERS ON GAS MAINS & SERVICES

CONSOLIDATED EDISON COMPANY OF N.Y., INC.
GAS OPERATIONS DEPT.

DATE 01/06/14
LAST REV. 04/06/21

DWG. NO. 502664 REV. 4