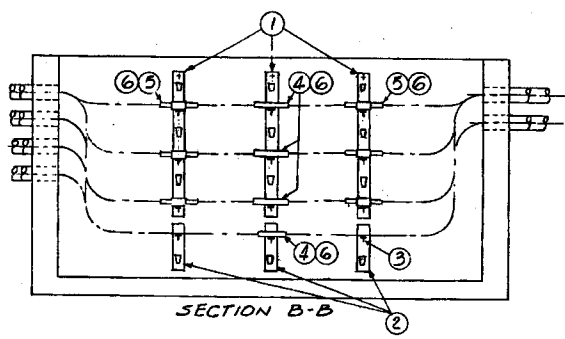
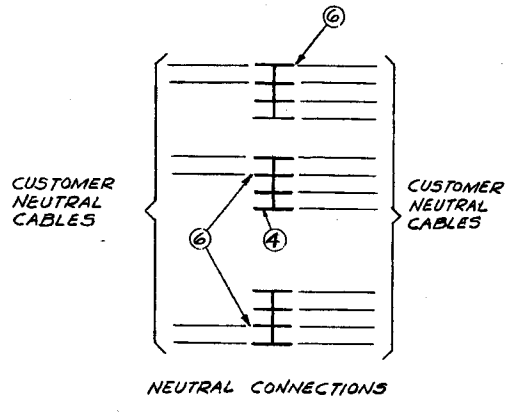
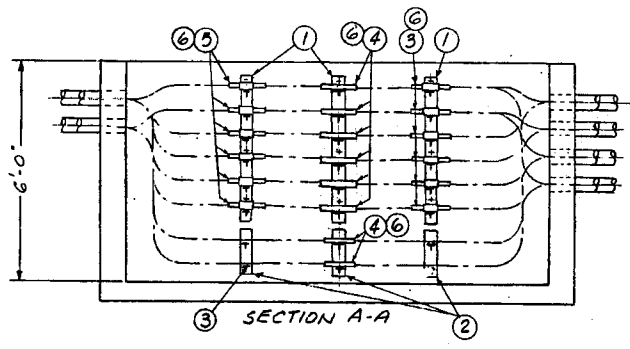
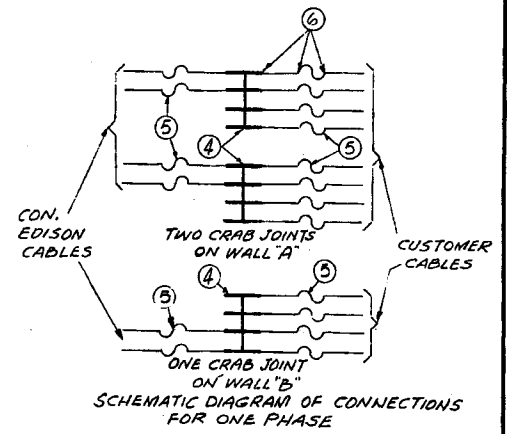
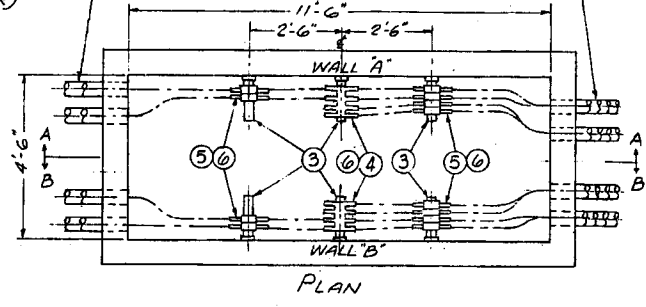


66821-03

7:2 edh 8-17-67
REVISIONS
 7:2 edh 9-25-67 1
 ADD. REF. TO LIMITERS ON CUSTOMER CABLES. NOTE A.
 W.H.F. 9-25-67
 R. Ruggs 10-26-67 2
 REMOVED REF. TO MFR. AND ADDED STOCK NUMBERS
 J.V. 10-23-67
 R.D.C. 11-30-72 3
 CHD. BILL OF MATERIAL & "NEUTRAL CONNECTIONS" DETAIL
 H.M. 11-6-72
 K. O'Keefe 5-25-75 4
 CHG'D TITLE, CUSTOMER NEUTRAL CABLE TO 500 KCMIL UPDATED B/MAT'L. REF. DWG'S, NOTES AND FILING INFO.
 W.J.T. 4-19-85

CON. EDISON CABLES 500 KCMIL (COPPER)

CUSTOMER CABLES 500 KCMIL (COPPER)



BILL OF MATERIAL						
ITEM NO.	QUANTITY	CUSTOMER	CON. ED. CO.		DWG. OR SPEC. NO.	SPEC. NO.
1	6			STANCHION, 6 SLOT, 3" CENTERS		
2	6			STANCHION, 2 SLOT, 3" CENTERS	EO-10302-C	003-0460
3	36			RACK ARM, 2 WAY	EO-10302-C	003-0353
4	12			4 WAY - AWAY 500 MCM NON-FUSIBLE COPPER CRAB JOINT (INSULATED)	EO-2238-C	003-0056
5	36	18		HIGH CAPACITY LIMITER, 500 MCM COPPER WITH CABLE SOCKETS AND INSULATION	EO-100,148	571-3136
6	150	42		HEAT SHRINKABLE TUBE FOR KCMIL CRAB JOINT AND LIMITER CONNECTIONS 1.8"x6"	EO-13118-B	596-2626

NOTES:

- A- ALL ITEMS LISTED IN BILL OF MATERIAL, UNDER CUSTOMER SHALL BE FURNISHED AND INSTALLED BY THE CUSTOMER. "CUSTOMER" CABLES SHALL BE CONNECTED BY THE CUSTOMER AND "EDISON" CABLES BY THE CONSOLIDATED EDISON CO. OF N.Y. LIMITERS ON THE CON. EDISON SIDE OF THE CRAB JOINT SHALL BE FURNISHED AND INSTALLED BY COMPANY.
- B- BENDING RADIUS OF CABLE SHALL NOT BE LESS THAN FIVE TIMES THE DIAMETER OF THE CABLE.
- C- ITEMS IN BILL OF MATERIAL SHALL BE PURCHASED FROM COMPANY APPROVED MANUFACTURERS AS SPECIFIED ON:
 EO-100,511 FOR CRAB JOINT
 EO-100,148 FOR LIMITERS
 EO-100,204 FOR HEAT SHRINKABLE TUBING.

REFERENCE DWG'S:
 11'-6" x 4'-6" x 6'-0" MANHOLE (PRECAST CONCRETE) EO-2164-B
 APPLICATION OF HEAT SHRINKABLE TUBING EO-13118-B

COPPER CABLE ARRANGEMENT-265/460 V
 PROPERTY LINE MANHOLE
 6 SETS OF 4-500 KCMIL COPPER CON. ED. CABLES
 12 SETS OF 4-500 KCMIL COPPER CUSTOMER CABLES

CONSOLIDATED EDISON COMPANY OF N. Y., INC.
 DATE 8-8-66
 LAST REV. 4-19-85
 DWG. NO. EO-12893-B REV. 4

FIELD MANUALS
 NO. 1 SUPV. SPLICING
 SECT. 9: SECONDARY P/L CABLE ARRANGMT.
 NO. 4: SERV. INSTL.
 SECT. 1: CUST. P/L BOX
 NO. 16: SERV. INSPEC. CTRL.
 SECT. 4: ELECT. SERVICES
 CONSTRUCTION STDS. MANUAL: No. 3
 SECTION 22
 CABLE ARRANGEMENT