

9-0836-03

REVISIONS

6

CHG'D CONDUIT GASKET TO RUBBER ALTERED TITLE H.M. 05/31/67

7

ADDED INSULATING JOINT & NOTES 4 & 5 C.W. 08/14/73

8

REMOVED INSULATING JOINT & NOTES 4 & 5 A.D. 01/19/79

9

CHG'D TITLE & SERV. SLEEVE TO SPIRAL WELD CONDUIT, DIM. D UPDATED SPECS. J.L. 05/29/79

10

ADDED NOTE 4 A.D. 08/21/79

11

REMOVED STYLE 39 COUPLING ADDED ITEM 9 & NOTE 5 J.L. 05/09/80

12

ADDED CONC. HOUSING, KEVLAR GASKET NOTE 6 & UPDATE NOTE 2 C.W. 11/02/87

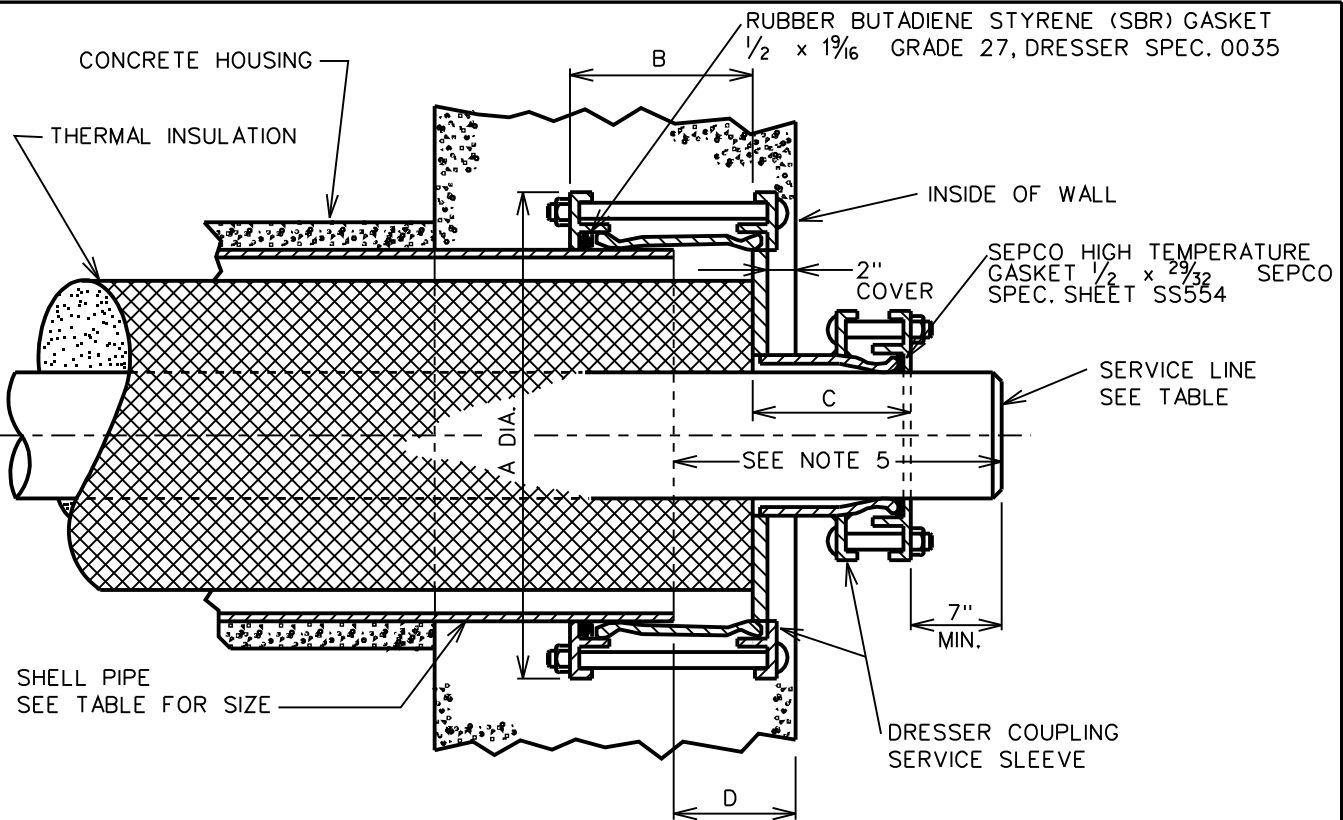
REVISED BY GENTEK 07/15/03

13

CONVERTED TO MICROSTATION; EDITORIAL CHANGES R.P.R. 7/6/05

14

REVISED NOTES, TABLES & ELEV LRD(SEA) 05/12/06



SIZE OF SERVICE LINE (IN)	* DRESSER COUPLING	SHELL PIPE SIZE O.D.	DIMENSIONS IN INCHES			
	STYLE 62 TYPE 2 NOMINAL SIZE		A	B	C	D
1	1" X 6"	6 <sup>5</sup> / <sub>8</sub> "	10 <sup>1</sup> / <sub>2</sub> "	5 <sup>3</sup> / <sub>16</sub> "	6 <sup>13</sup> / <sub>16</sub> "	4
2	2" X 8"	8 <sup>5</sup> / <sub>8</sub> "	12 <sup>1</sup> / <sub>16</sub> "	5 <sup>3</sup> / <sub>16</sub> "	7 <sup>3</sup> / <sub>8</sub> "	4
3	3" X 10"	10 <sup>3</sup> / <sub>4</sub> "	14 <sup>5</sup> / <sub>8</sub> "	5 <sup>3</sup> / <sub>16</sub> "	7 <sup>3</sup> / <sub>8</sub> "	4
4	4" X 12"	12 <sup>3</sup> / <sub>4</sub> "	16 <sup>3</sup> / <sub>4</sub> "	5 <sup>3</sup> / <sub>16</sub> "	7 <sup>5</sup> / <sub>8</sub> "	4
6	6" X 16"	16"	20	7 <sup>5</sup> / <sub>16</sub> "	7 <sup>9</sup> / <sub>16</sub> "	5
8	8" X 18"	18"	22	7 <sup>5</sup> / <sub>16</sub> "	7 <sup>9</sup> / <sub>16</sub> "	5
10	10" X 20"	20"	24 <sup>1</sup> / <sub>16</sub> "	7 <sup>5</sup> / <sub>16</sub> "	7 <sup>9</sup> / <sub>16</sub> "	5
12	12" X 24"	24"	28	7 <sup>5</sup> / <sub>16</sub> "	7 <sup>9</sup> / <sub>16</sub> "	5
16	16" X 28"	28"	33	7 <sup>5</sup> / <sub>16</sub> "	8 <sup>1</sup> / <sub>16</sub> "	5

\* SEE "APPROVED STEAM SERVICE EQUIPMENT" BOOKLET

NOTES:

1. INSTALL AND COMPRESS GASKETS BEFORE THE WALL IS POURED.
2. MATERIAL FOR SHELL PIPE SHALL BE IN ACCORDANCE WITH CON EDISON SPEC. S-9035.
3. DURING INSTALLATION, REINFORCING RODS IN THE WALL SHALL CLEAR SHELL PIPE AND DRESSER COUPLING BY 6 INCHES.
4. DRESSER COUPLING SERVICE SLEEVE FURNISHED AND INSTALLED BY CUSTOMER.
5. WHEN INSTALLING SERVICE LINE THROUGH WALL, A MINIMUM EXTENSION OF 19 INCHES IS REQUIRED TO ALLOW FOR CUT OFF OF STEEL BLANKS OR END CAPS.
6. COUPLING BOLTS MAY BE REVERSED TO FACILITATE INSTALLATION.

SUPERSEDES EO-7884-C  
EO-7885-B  
EO-7886-C

**CUSTOMER INSTALLATION  
OF DRESSER COUPLING SLEEVE  
STEAM SERVICES 1" TO 12"**

CONSOLIDATED EDISON COMPANY OF N.Y., INC.  
STEAM DISTRIBUTION ENGINEERING

DATE 11-25-59 DWG. NO. **EO-9380-C** REV. **14**  
LAST REV. 05-12-06