



conEdison

www.conEd.com

TIME-OF-USE RATES



OFF-PEAK HOURS CAN LOWER YOUR COSTS

Time-of-Use Rates: A Strategy for Savings

Con Edison's Time-of-Use rates can help you save money if you can shift when you use appliances that consume a lot of electricity — such as air conditioners, dishwashers, and clothes dryers — to off-peak hours. Off-peak hours are weekdays from 10 p.m. to 10 a.m., weekends, and some holidays. These are the hours when demand on our electric distribution system is reduced and the cost of electricity is lowest.

The following questions and answers can help you decide if Time-of-Use rates could reduce your electric costs.



How can I benefit from Time-of-Use rates?

Research shows that, in the course of a year, customers can save significantly with Time-of-Use rates by shifting electricity usage to off-peak hours and cutting back how much they use during peak hours — especially during the summer months. You probably will benefit under Time-of-Use rates if you run appliances that consume a lot energy, such as air conditioners, electric dryers, dishwashers, electric heaters, etc., *only* during weekday off-peak hours or on weekends.

Will I need a new meter?

Yes. When you choose Time-of-Use rates, Con Edison will install, free of charge, a Time-of-Use electric meter that records how much electricity you use during specific peak and off-peak periods. This meter lets you see how much electricity you use during peak and off peak hours.

Which hours are peak and which are off-peak?

Peak hours are weekdays from 10 a.m. to 10 p.m. Off-peak hours are weekdays from 10 p.m. to 10 a.m., weekends, and some holidays.

What's the difference between Time-of-Use rates and regular rates?

Time-of-Use rates are significantly lower than standard electric rates during off-peak hours. But, when a Time-of-Use customer uses electricity during peak hours, they are charged a rate higher than standard electric rates. So, you must be willing to shift when you use appliances that require a lot of electricity from peak to off-peak hours.



Can I still use appliances and equipment whenever I want?

Yes, but you will be charged more than standard rates during peak hours.

How will I know if Time-of-Use rates are saving me money?

Each year, Con Edison compares the amount of electricity you used and what you paid for it under Time-of-Use rates with what you would have paid under standard rates. If we find that you are not benefitting under Time-of-Use rates, we will send a letter letting you know.

If I sign up, can I change my mind?

Yes. Time-of-Use rates are voluntary, so if you feel you are not saving money, just let us know and we will change your account back to standard rates.

To enroll or learn more about Con Edison's Time-of-Use, call 1-877-806-2830, visit www.conEd.com/TOU, send an e-mail to timeofuse@coned.com, or fill out and return the attached form.



Take the Time-of-Use Quiz

Answer the following questions and add the point values to learn if you are a good candidate for Time-of-Use rates.

1. On average, how many kilowatt-hours (kWh) do you use each day?

(Visit the My Account section of **www.conEd.com** to view your usage history. Divide 12 months of consumption by 365 days — that's your average daily use.)

- a) Less than 10 kWh (0 pts.)
- b) 10 – 25 kWh (30 pts.)
- c) More than 25 kWh (60 pts.)

2. What type of air conditioning do you have?

- a) Central (15 pts.)
- b) Window or wall unit (10 pts.)
- c) None (0 pts.)

3. How many hours a day, on weekdays, is someone usually home between 10 a.m. and 10 p.m.?

- a) 1 hour or less (15 pts.)
- b) 2-3 hours (7 pts.)
- c) 4-5 hours (3 pts.)
- d) 6 or more hours (0 pts.)

4. Do you have an electric clothes dryer?


- a) Yes (10 pts.)
- b) No (0 pts.)

5. What kind of electric heat do you use at home?

- a) Fully electric (10 pts.)
- b) Electric heaters (5 pts.)
- c) None (0 pts.)

6. Do you have an electric water heater?

- a) Yes (10 pts.)
- b) No (0 pts.)



7. If you have an electric heater, can you keep the thermostat turned to a low setting on weekdays, between 10 a.m. and 10 p.m.?

- a) Yes (10 pts.)
- b) No (0 pts.)

8. Do you have a swimming pool?

- a) Yes (20 pts.)
- b) No (0 pts.)

9. Do you have a dehumidifier?

- a) Yes (10 pts.)
- b) No (0 pts.)

Add the points and check your total score against the following:

Total Score

40 points or more: You probably will benefit under Time-of-Use rates if you can run the appliances that use a lot of electricity during weekday off-peak hours or on weekends.

30 to 39 Points: You might benefit from Time-of-Use rates, but your benefit won't be as great as in the category above. The lower your score, the less likely it is you will benefit.

Under 30 Points: You probably won't benefit from Time-of-Use rates because it is unlikely you can shift enough electricity usage to off-peak hours.

If the quiz indicates that you probably won't benefit from Time-of-Use rates, check out our PowerYourWay Web site (www.poweryourway.com) to learn about another way you could save money on your energy bills.

How do I enroll to use Time-of-Use rates?

To begin using Time-of-Use rates, complete, sign, and mail this form to:

Con Edison

Attention: Time-of-Use Coordinator
30 Flatbush Ave., Room 520
Brooklyn, NY 11217

Please note: Because Time-of-Use rates are voluntary, we require a signed enrollment form.

Name

Address

Town

Zip code

Account number

Please enroll me to use Con Edison's voluntary Time-of-Use rates.

Signature

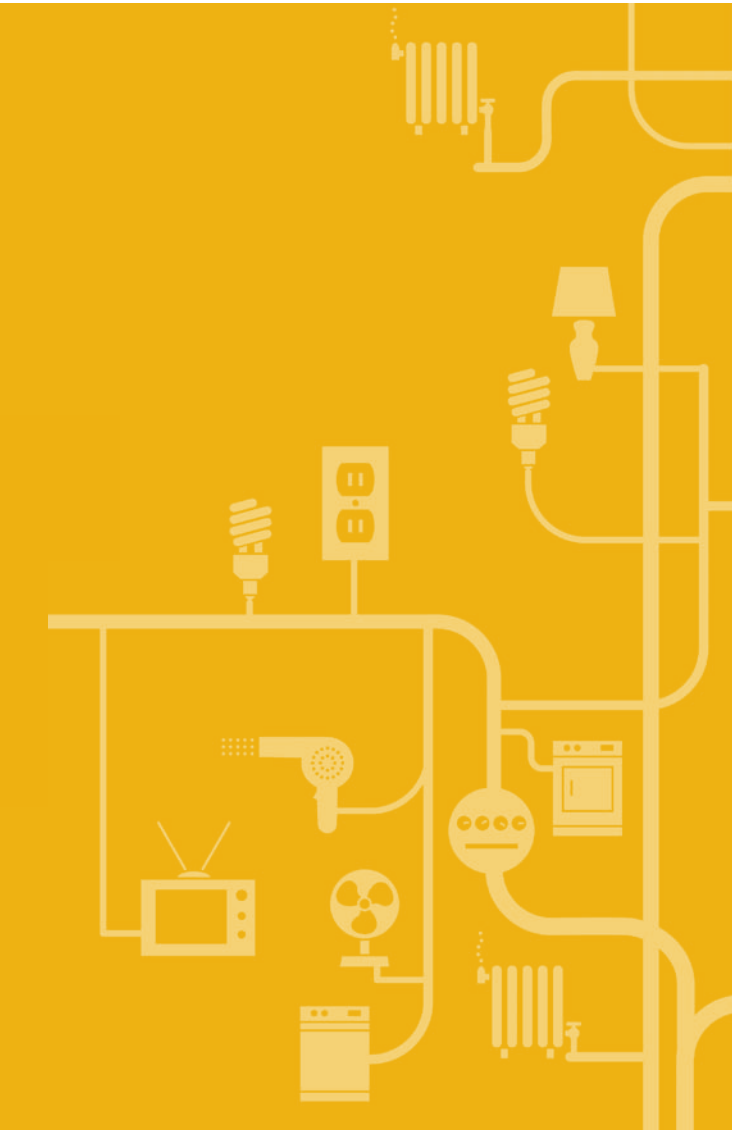
Date





conEdison

www.conEd.com



Printed on paper with 10% recycled content
and 90% content from well-managed forests.

November 2008
968-8045